

Fabric/Leather Collection 2023

Price group A



Alice 991463

Composition: 51% polyester, 42% acrylic, 7% cotton

Martindale: 52 000

Lightfastness: 5

Pilling: 4-5

Price group: A

Note: Oeko-Tex® 15.HTR.74613

Care Instructions



Cream 03



Beige 62



Brown 65



Peach 32



Bronze 19



Mole 63



Grey 77



Slate 49



Midnight blue 48



Petrol 45



Can 991347

Composition: 51,5% acrylic, 48,5% polyester

Martindale: 35 000

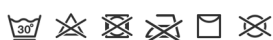
Lightfastness: 5-6

Pilling: 4-5

Price group: A

Note: Oeko-Tex® 1602008

Care Instructions



Snow 00



Light beige 60



Blue 47



Mole 63



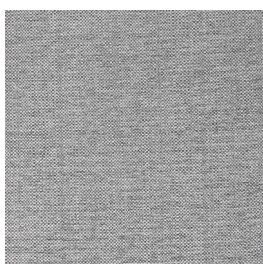
Light grey 72



Grey 77



Night 89



Cortina 991108

Composition: 44% acrylic, 42% polyester, 14% polypropen

Martindale: 26 500

Lightfastness: 5

Pilling: 4-5

Price group: A

Note: Oeko-Tex® 1505024

Care Instructions



Snow 00



White 01



Sand 09



Dark blue 48



Soft grey 71



Light grey 72



Silver 75



Grey 77



Night 89



Kate 991396

Composition: 100% polyester

Martindale: 30 000

Lightfastness: 5

Pilling: 4-5

Price group: A

Note: Oeko-Tex® 2022OK2426

Care Instructions



Ivory 03



Sky 46



Stone 73



Silver 75



Dark grey 78

Fabric/Leather Collection 2023

Price group A



Lindsey 996325

Composition: 54,5% cotton, 45,5% polyester

Martindale: 80 000

Lightfastness: 4

Pilling: 4-5

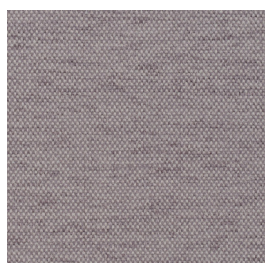
Price group: A

Note: Oeko-Tex® 2008AN7944

Care Instructions



Red/Nature 35



March 991385

Composition: 51,2% polyester, 47,9% acrylic

Martindale: 35 000

Lightfastness: 5

Pilling: 4-5

Price group: A

Note: Oeko-Tex® 1602008

Care Instructions



Sand 09



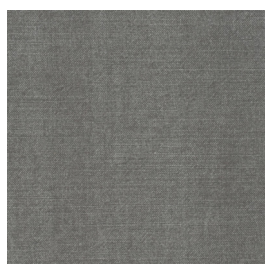
Soft pink 31



Light grey 72



Dark grey 78



Mariam 991345

Composition: 100% cotton

Martindale: 22 000

Lightfastness: 4

Pilling: 5

Price group: A

Note: Oeko-Tex® 2018OK1617

Care Instructions



Sand 09



Brown 65



Grey 77



Marsel 991483

Composition: 76% polyester, 24% acrylic

Martindale: 30 000

Lightfastness: 4-5

Pilling: 4-5

Price group: A

Note: For Furninova only.

Note: Oeko-Tex® 1602008

Care Instructions



Cream 03



Beige 62



Taupe 64



Brown 65



Light grey 72



Dark grey 78



Bronze 19



Light green 26



Olive 28

Fabric/Leather Collection 2023

Price group A



Oliver 991475

Composition: 59% rolefin, 41% polyester

Martindale: 25 000

Lightfastness: 6

Pilling: 4-5

Price group: A

Note: For Furninova only.

Note: Oeko-Tex® 2106125

Care Instructions



Nature 01



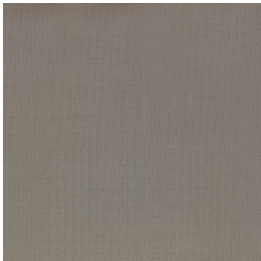
Mole 63



Stone 73



Grey 77



Palermo 991481

Composition: 100% cotton

Martindale: 20 000

Lightfastness: 5

Pilling: 5

Price group: A

Note: For Furninova only.

Note: Oeko-Tex® 2018OK1617

Care Instructions



Dark grey 78



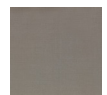
Dark blue 48



Cream 03



Linen 61



Stone 73



Olive 26



Copper 18



Paris 991467

Composition: 100% polyester

Martindale: 27 000

Lightfastness: 5

Pilling: 4-5

Price group: A

Note: Oeko-Tex® 1505024

Care Instructions



Emerald 27



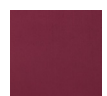
Bronze 39



Petrol 45



Steel 49



Aubergine 57



Light beige 60



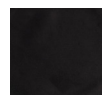
Taupe 64



Brown 65



Grey 77



Black 89



Ribcord 991493

Composition: 88% polyester, 12% polyamid

Martindale: 100 000

Lightfastness: 4

Pilling: 4-5

Price group: A

Note: Always horizontal lines.

Note: Oeko-Tex® 1908090

Care Instructions



Antracit 79



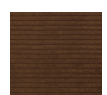
White 00



Taupe 64



Mustard 17



Brown 65



Petrol 45



Aqua 19



Grey 77



Blossom 31

Fabric/Leather Collection 2023

Price group A



Salento 991482

Composition: 100% polyester

Martindale: 40 000

Lightfastness: 4-5

Pilling: 4

Price group: A

Note: Oeko-Tex® 0611045

Care Instructions



White 01



Linen 61



Stone 73



Dark blue 48



Mole 63



Dark green 28



Black 89

Fabric/Leather Collection 2023

Price group B



New

Animas 991499

Composition: 69% recycled polyester, 31% polyester

Martindale: 45 000

Lightfastness: 5

Pilling: 5

Price group: B

Note: Oeko-Tex® 2106125

Care Instructions



White 00



Bronze 19



Mole 63



Grey 77



Petrol 45



Bardot 991428

Composition: 59% acrylic, 23% polyester, 13% viscose, 5% linen

Martindale: 50 000

Lightfastness: 4

Pilling: 4

Price group: B

Note: Oeko-Tex® 1505024

Care Instructions



Nature 01



Taupe 64



Stone 72



Grey 77



Antracit 79



New

Benson 991500

Composition: 53% rolefin, 26% polyester, 21% acrylic

Martindale: 30 000

Lightfastness: 5-6

Pilling: 4

Price group: B

Note: Oeko-Tex® 1505024

Care Instructions



Cream 03



Taupe 64



Bronze 19



Green 26



Blue 47



Silver 75



Dark grey 78



Casual 991443

Composition: 78% polyester, 22% cotton

Martindale: 100 000

Lightfastness: 5-6

Pilling: 4

Price group: B

Note: Oeko-Tex® 0611045

Care Instructions



Ivory 03



Taupe 63



Mole 64



Mint 22



Light blue 41



Petrol 45



Silver 72



Grey 75



Dark grey 77

Fabric/Leather Collection 2023

Price group B



Eros 991070

Composition: 50,2% acrylic,
41,2% polyester, 8,6% viscose

Martindale: 50 000

Lightfastness: 5

Pilling: 4

Price group: B

Note: Oeko-Tex® 1505024

Care Instructions



Hanger 1



Plum 58



Stone 73



Midnight blue 48



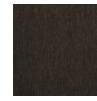
Antracit 79



Forest 28



Night 89



Mole 63



Earth 67

Hanger 2



Mustard 17



Petrol 45



Peach 32



Sea grass 21



Bronze 64



Burgundy 36



Ocean 42



New

Etna 991497

Composition: 50% acrylic,
47% rolefin, 3% polyester,

Martindale: 25 000

Lightfastness: 5

Pilling: 3-4

Price group: B

Note: Oeko-Tex® 1505024

Care Instructions



Cream 03



Grey 77



Beige 62



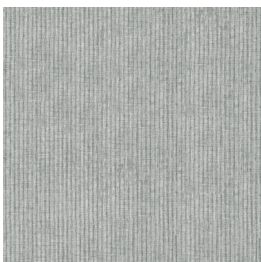
Mole 63



Peach 32



Olive 28



Hombre 991346

Composition: 100% polyester

Martindale: 35 000

Lightfastness: 4

Pilling: 5

Price group: B

Note: Oeko-Tex® 0611045

Care Instructions



Light green 21



Silver 75



Light pink 30



Dark grey 78



Light beige 60



Mole 63



Light grey 72

Fabric/Leather Collection 2023

Price group B



Evita 991373

Composition: 54,9% polyester,
38,5% acrylic, 6,6% viscose

Martindale: 25 000

Lightfastness: 5-6

Pilling: 4

Price group: B

Note: Oeko-Tex® 1505024

Care Instructions



Snow 01



Pearl 02



Ivory 03



Cream 04



Nature 05



Sand 06



Soft grey 07



Light grey 08



Silver 09



Soft purple 10



Soft pink 11



Light pink 12



Peach 13



Salmon 14



Lemon 15



Pear 16



Lime 17



Green tea 18



Aqua 19



Ice 20



Sky 21



Baby blue 22



Light beige 23



Taupe 24



Mole 25



Orange 26



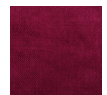
Strawberry 27



Wine 28



Plum 29



Raspberry 30



Pink 31



Purple 32



Lavendel 33



Aubergine 34



Forest 35



Banana 36



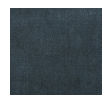
Sun 37



Ocean 38



Petrol 39



Blueberry 40



Concrete 41



Antracit 42



Coffee 43



Black 44



Laura 991464

Composition: 100% polyester

Martindale: 50 000

Lightfastness: 5

Pilling: 5

Price group: B

Care Instructions



Cream 03



Sand 09



Pink 31



Ice 44



Petrol 45



Taupe 64



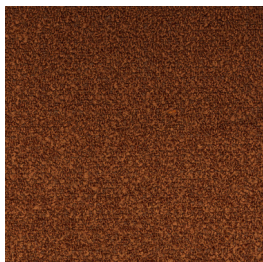
Stone 72



Grey 77

Fabric/Leather Collection 2023

Price group B



Marilyn 991476

Composition: 64% acrylic, 36% polyester

Martindale: 35 000

Lightfastness: 6

Pilling: 4

Price group: B

Note: Oeko-Tex® 1505024

Care Instructions



White 00



Nature 01



Beige 62



Mustard 17



Bronze 19



Brown 65



Silver 75



Nancy 991120

Composition: 46% acrylic, 44% polyester, 10% cotton

Martindale: 40 000

Lightfastness: 5-6

Pilling: 5

Price group: B

Note: Oeko-Tex® 0903007

Care Instructions



Nature 01



Sand 09



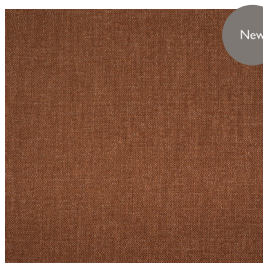
Soft pink 30



Soft blue 47



Soft grey 71



Nola 991498

Composition: 58% rolofin, 29% recycled polyester, 13% polyester

Martindale: 45 000

Lightfastness: 5

Pilling: 5

Price group: B

Note: Oeko-Tex® 2106125

Care Instructions



Taupe 64



Stone 73



Cream 03



Bronze 19



Grey 77



Blue 47



Trapani 991484

Composition: 70% polyester, 30% cotton

Martindale: 100 000

Lightfastness: 4-5

Pilling: 4

Price group: B

Note: Oeko-Tex® 2022OK2426

Care Instructions



Mustard 17



Olive 26



Bronze 19



Sand 09



Mole 63



Stone 73



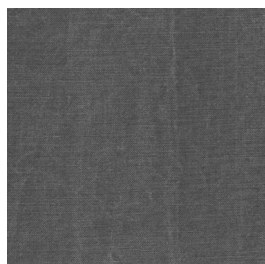
Grey 77



Peach 32

Fabric/Leather Collection 2023

Price group B



Tristan 991817

Composition: 60% cotton, 40% linen

Martindale: 20 000

Lightfastness: 5

Pilling: 5

Price group: B

Note: Oeko-Tex® 2018OK1617

Care Instructions



Snow white 00



Sand 09



Beige 62



Mole 63



Stone 73



Grey 77



Dark grey 78



Triton 991361

Composition: 100% polyester

Martindale: 84 000

Lightfastness: 6

Pilling: 4-5

Price group: B

Note: Oeko-Tex® 0903007

Care Instructions



Ivory 03



Soft green 22



Wine 36



Light beige 60



Soft blue 40



Light grey 71



Stone 73



Charcoal 78



Antracit 79

Fabric/Leather Collection 2023

Price group C



Catania 991488

Composition: 70% wool, 20% polyester, 5% polyamide, 5% other fibres

Martindale: 55 000

Lightfastness: 4-5

Pilling: 3-4

Price group: C

Care Instructions



Mustard 17



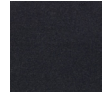
Rust 19



Olive 28



Ocean 46



Dark blue 48



Light grey 72



Stone 73



Grey 77



Dark grey 78



Celine 991392

Composition: 100% polyester

Martindale: 97 000

Lightfastness: 5

Pilling: 4

Price group: C

Note: For Furninova only.

Note: Oeko-Tex® 1505024

Care Instructions



Emerald 27



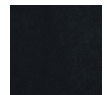
Mint 22



Ice 46



Petrol 45



Midnight blue 48



Taupe 64



Brown 65



Grey 77



Antracit 79



Chanel 991434

Composition: 30% viscose, 25% cotton, 20% polyester, 20% linen, 5% other fibers

Martindale: 25 000

Lightfastness: 5

Pilling: 3-4

Price group: C

Note: For Furninova only.

Note: Chanel, Coco and Gabrielle in the same fabric hanger

Care Instructions



Nature 01



Grey 77



Mole 63



Coco 991435

Composition: 30% viscose, 25% cotton, 20% polyester, 20% linen, 5% other fibers

Martindale: 25 000

Lightfastness: 5

Pilling: 3-4

Price group: C

Note: For Furninova only.

Note: Chanel, Coco and Gabrielle in the same fabric hanger

Care Instructions



Nature 01



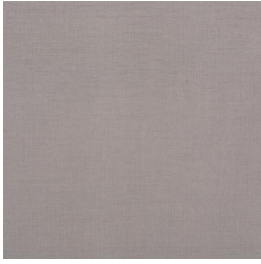
Grey 77



Mole 63

Fabric/Leather Collection 2023

Price group C



Degas 991363

Composition: 85% polyester, 15% cotton

Martindale: 30 000

Lightfastness: 5-6

Pilling: 4-5

Price group: C

Note: Oeko-Tex® 2022OK1053

Care Instructions



Nature 01



Grey 77



Ivory 03



Antracit 79



Mole 63



Bronze 19



Silver 75



Olive 28



Midnight blue 48



Denali 991501

Composition: 93% rolefin, 7% recycled polyester

Martindale: 30 000

Lightfastness: 4-5

Pilling: 4-5

Price group: C

Note: Oeko-Tex® 1505024

Care Instructions



Hanger 1



White 00



Silver 75



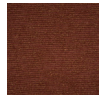
Beige 62



Mole 63



Peach 32



Bronze 19

Hanger 2



Dark grey 79



Olive 28



Blue 47



Dolce 991477

Composition: 73 acrylic, 24% polyester, 3% viscose

Martindale: 50 000

Lightfastness: 5

Pilling: 4

Price group: C

Note: Oeko-Tex® 1505024

Care Instructions



Cream 03



Gold 18



Sand 09



Beige 62



Mole 63



Rust 38

Fabric/Leather Collection 2023

Price group C



Gabrielle 991436

Composition: 49% cotton, 33% polyester, 12% acrylic, 6% other fibres

Martindale: 35 000

Lightfastness: 4

Pilling: 3-4

Price group: C

Note: Chanel, Coco and Gabrielle in the same fabric hanger

Note: For Furninova only.

Care Instructions



Emerald 27



Mole 63



Gianni 991478

Composition: 77 acrylic, 22% polyester, 1% viscose

Martindale: 50 000

Lightfastness: 5

Pilling: 4

Price group: C

Note: Oeko-Tex® 1505024

Care Instructions



Cream 03



Sand 09



Mole 63



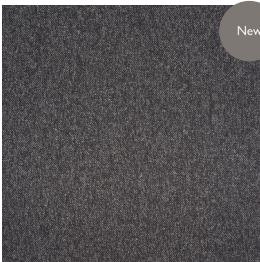
Bronze 19



Grey 77



Charcoal 78



Ito 991502

Composition: 71% polyester, 20% polypropolen, 9% cotton

Martindale: 100 000

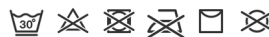
Lightfastness: 5-6

Pilling: 4-5

Price group: C

Note: Oeko-Tex® 20220K1053

Care Instructions



Stone 73



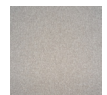
Grey 77



Charcoal 78



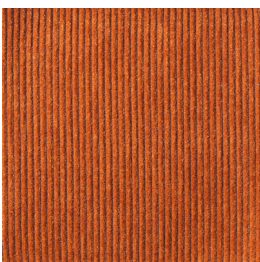
Silver 75



Sand 09



Taupe 64



Manchester 991445

Composition: 47% polyester, 36% acrylic, 9% wool, 8% viscose

Martindale: 27 000

Lightfastness: 4

Pilling: 4

Price group: C

Note: Oeko-Tex® 1505024

Care Instructions



Sand 09



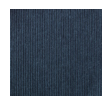
Mustard 17



Orange 18



Turquoise 42



Petrol 45



Green 26



Grey 77



Antracite 79



Cream 03

Fabric/Leather Collection 2023

Price group C



Matiss 991362

Composition: 55% polyester, 20% viscose, 15% cotton, 10% linen

Martindale: 35 000

Lightfastness: 5-6

Pilling: 4-5

Price group: C

Note: Oeko-Tex® 2022OK1053

Care Instructions



Snow 00



Nature 01



Sand 09



Soft pink 31



Peach 32



Terracotta 35



Petrol 45



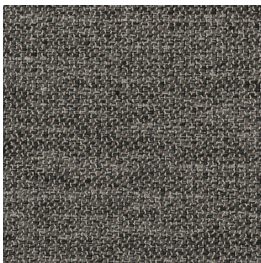
Dark blue 48



Light grey 72



Grey 77



Melange 991379

Composition: 42% polypropylene, 42% polyester, 16% cotton

Martindale: 85 000

Lightfastness: 5-6

Pilling: 4-5

Price group: C

Note: Oeko-Tex® 2022OK1053

Care Instructions



Ivory 03



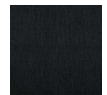
Silver 75



Grey 77



Antracit 79



Night 89



Mercedes 991429

Composition: 74% acrylic, 26% polyester

Martindale: 40 000

Lightfastness: 4

Pilling:

Price group: C

Note: Oeko-Tex® 1505024

Care Instructions



Cream 03



Taupe 64



Aubergine 57



Green 26



Blue 47



Stone 73



Dark grey 78



Moulin 991490

Composition: 80% polypropylen, 14% polyester, 3% cotton, 3% other fibres

Martindale: 80 000

Lightfastness: 6

Pilling: 4-5

Price group: C

Note: Oeko-Tex® 2022OK1053

Care Instructions



Beige 62



Linen 61



Silver 75



Masala 17



Mole 63



Grey 77

Fabric/Leather Collection 2023

Price group C



Piazola 991492

Composition: 50% polyester, 28% acrylic, 10% viscose, 4% cotton

Martindale: 50 000

Lightfastness: 5

Pilling: 4-5

Price group: C

Note: Oeko-Tex® 1908101

Care Instructions



Beige 62



Green 26



Mustard 17



Mole 63



Antracit 79



Sheford 991383

Composition: 70% wool, 20% polyester, 5% polyamide, 5% other fibres

Martindale: 60 000

Lightfastness: 4-5

Pilling: 3-4

Price group: C

Care Instructions



Mustard 17



Aubergine 57



Forest 28



Dark blue 48



Light grey 72



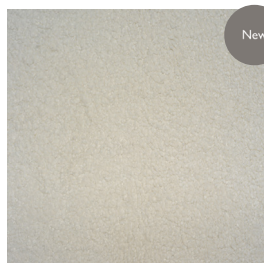
Mole 63



Stone 73



Dark grey 77



New

Trionfo 991503

Composition: 100% polyester

Martindale: 100 000

Lightfastness: 4

Pilling: 4

Price group: C

Note: Oeko-Tex® SHMO 084148

Care Instructions



Cream 03

Fabric/Leather Collection 2023

Price group C



Velvety 991456

Composition: 91% polyester, 9% cotton

Martindale: 200 000

Lightfastness: 5-6

Pilling: 4-5

Price group: C

Note: Oeko-Tex® 2022OK1053

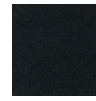
Care Instructions



Hanger 1



Peach 32



Dark teal 29



Ivory 03



Stone 73



Mole 63



Dark grey 78



Mustard 17



Bronze 64



Green 22



Dark green 28



Dark blue 48

Hanger 2



Light beige 60



Taupe 62



Viata 991491

Composition: 39% polyester, 28% acrylic, 12% viscose, 11% polypropylene, 10% linen

Martindale: 50 000

Lightfastness: 5

Pilling: 5

Price group: C

Note: Oeko-Tex® 1908101

Care Instructions



White 01



Beige 62



Silver 75



Olive 26



Blue 47



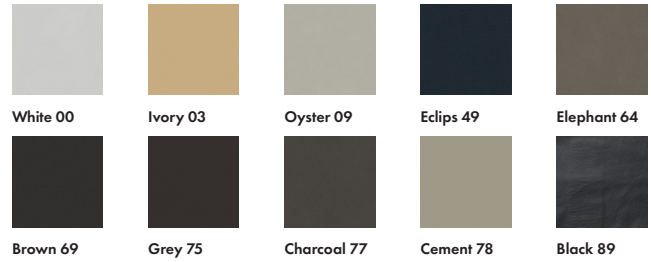
Grey 77

Fabric/Leather Collection 2023

Leather



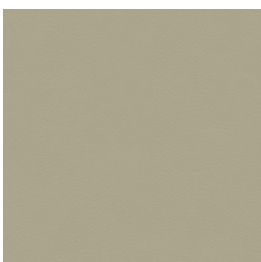
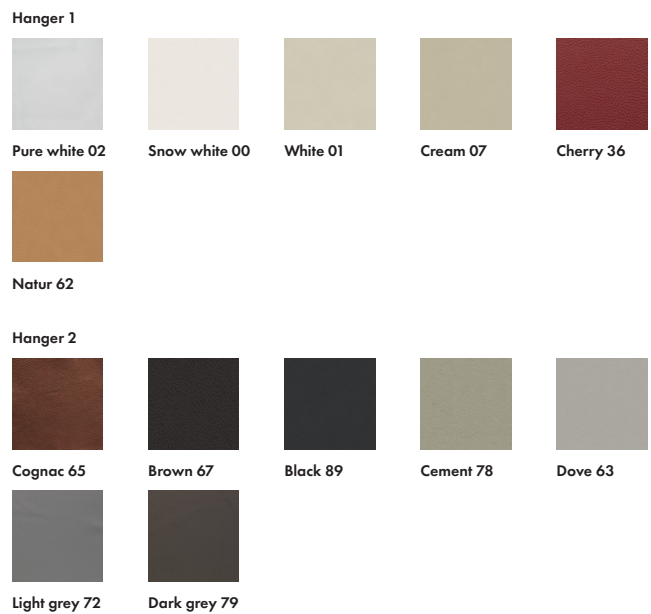
Meno 892533
Semianiline Combined with split
Price group: 20
Care Instructions



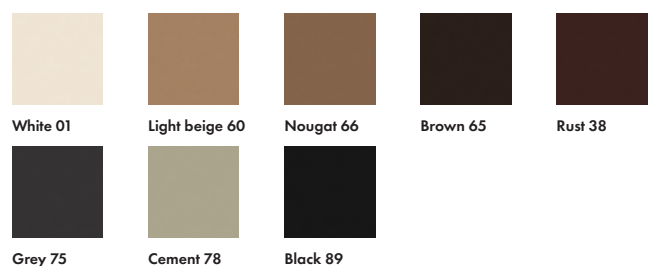
Naturelle 892510
Standard Combined with split
Price group: 20
Care Instructions



Fantasy 892514
Semianiline Combined with split
Price group: 30
Care Instructions

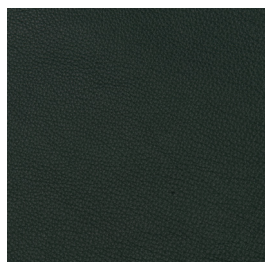


Zero 892534
Semianiline Combined with split
Price group: 30
Care Instructions



Fabric/Leather Collection 2023

Leather



Bolzano 892545

Semianiline

Price group: 56

Care Instructions



Bordeaux 38



Dark blue 48



Teal 46



Sea grass 21



Espresso 69



Mustard 17



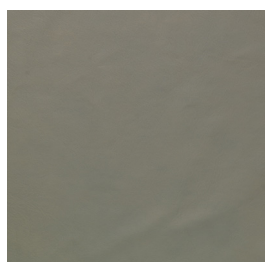
Grey 77



Lava 85



Black 89



Jesolo 892547

Aniline

Price group: 56

Care Instructions



Cognac 64



Grey 78



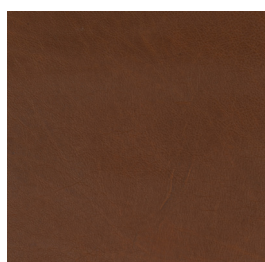
Testa moro 69



Nero 89



Eucalyptus 72



Western 892549

Aniline

Price group: 56

Care Instructions



Cognac 64



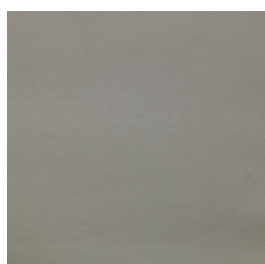
Chestnut 68



Dark brown 69



Black 89



Vesuvio 892552

Semianiline

Price group: 56

Care Instructions



White 00



Dark brown 66



Cement 78



Black 89



Bergamo 892550

Natural

Price group: 58

Note: For Furninova only.

Care Instructions



Taupe 63



Nature 62



Olive 26



Cognac 65



Chestnut 68



Black 89



Sea grass 21

Fabric/Leather Collection 2023

Leather



California 892555

Semianiline

Price group: 58

Care Instructions



Mocca 69



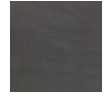
Taupe 64



Olive 63



Stone 72



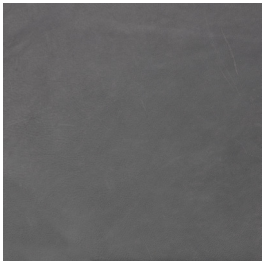
Dark grey 78



Cognac 65



Rust 19



Grizzly 891518

Natural

Price group: 58

Care Instructions

Hanger 1



Taupe 63



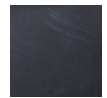
Olive 28



Natur 62



Kastanj 68



Dark blue 48



Sand 09

Hanger 2



Cognac 65



Salvia 64



Light grey 72



Frost grey 71



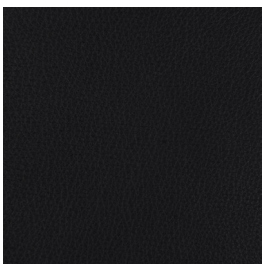
Dark grey 78



Antrasit 79



Black 89



Nappa 892548

Aniline

Price group: 58

Care Instructions



White 01



Dark blue 48



Cement 78



Dark grey 79



Black 89



Sorrento 892554

Aniline

Price group: 58

Care Instructions



Taupe 64



Sand 60



Nougat 66



Mocca 68



Cognac 65



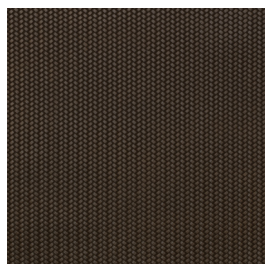
Grey 77



Black 89

Fabric/Leather Collection 2023

Leather



Western embossed 882549

Aniline

Price group: 58

Note: Only for Amaya Decor, footstool and cushions.

Care Instructions



Cognac embossed 64



Chestnut embossed 68



Dark brown embossed 69



Black embossed 89



Nubuck 892541

Nubuck Aniline

Price group: 60

Care Instructions



Terracotta 35



Pink 52



Olive 26



Light grey 73



Ice 44



Dark blue 48



Clay 60



Dark grey 78



Sauvage 891093

Aniline

Price group: 60

Care Instructions

Hanger 1



Ice 44



Turquoise 42



Olive 26



Dark blue 48



Grey 73

Hanger 2



Taupe 65



Cognac 64



Terra 66



Testa moro 69



Nero 89

Fabric/Leather Collection 2023

Out of range

A-fabric

Megan

Nomi

B-fabric

Maletto

Peron

C-fabric

Ally

Alyssa

Divine

Degas - Peach and Terracotta.

Manchester - Peach

Leathers

Nabucco